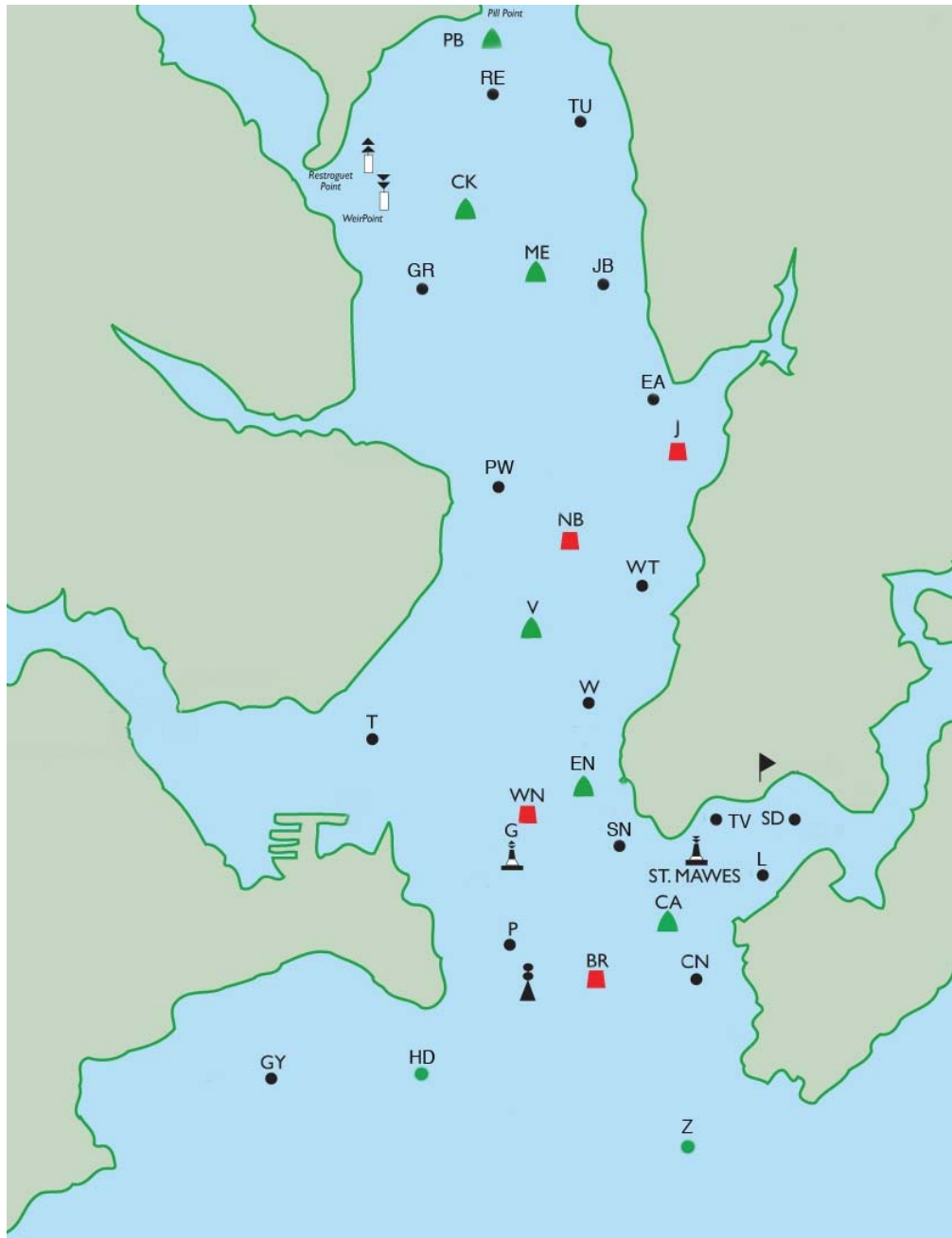


THESE INSTRUCTIONS MUST BE READ TOGETHER
WITH THE FULL SAILING INSTRUCTIONS.
COPIES AVAILABLE IN THE CLUBHOUSE AND ON THE WEBSITE



ST MAWES SAILING CLUB RACE CARD 2010

Classes and Start Times:

	Sunday Morning Points	Thursday Evening Points	Sunday Special Events	Victory Cup
Warning Signal	1020	1750	1405	1235
Preparatory Signal	1025	1755	1410	1240
Class H Shrimpers	1030	1800	1415	1245
Class F 18ft Restricted Class	1035	1805	1420	1250
Class A P.Y. Yachts	1040	1810	1425	1255
Class W Ajax	1045	1815	1430	1300
Class T Fast Handicap Dinghies 1101 & below	1050	1820	1435	1305
Class R Slow Handicap Dinghies 1102 & above	1055	1825	1440	1310

For the Frankie Peters Races & Thursdays 17/6, 1/7, 15/7 & 29/7 only:

Class V Sunbeams	1100	1830	1445	1315
Class B Working Boats	1110	1840	1450	1320
Class C Small Working Boats				1325

Apart from the Victory Cup, the large & small working boats will race together. All these classes are welcome to join with Class A (PY Yachts) for other Thurs or Sun races.

REMINDERS FROM SAILING INSTRUCTIONS (SEE FULL SIs FOR DETAILS)

Starting Signals	Class letter board (check if red/green) and Course number on boards on club balcony
Starting Line	Transit from yellow poles on Quay and Club roof, and between Inner Mark (Flag I) and ODM & Turning Mark (Flag D, MARK SD). Working Boats (B) start between ODM and Quay wall.
Starting Penalties	Round-an-End rule applies in the minute before the start.
Individual Recall	One sound signal and ORANGE flashing light.
General Recall	Two sound signals and GREEN flashing light. Class starts last.
Turning Mark	THE OUTER DISTANCE MARK (SD) WILL BE THE TURNING MARK. Leave to PORT on all laps, until the finish.
Change Course	One sound signal and flashing GREEN light. Look for Class letter and Course number on boards on Club. Sail full number of rounds of new course in addition to rounds of original course already completed.
Shorten Course	Two sound signals and flashing ORANGE light. Go through finish line.
Finish Line	As start line, between INNER Mark and ODM, but in opposite direction.
Time Limits	Morning races 13:30, Afternoon races 17:30, Evening races 20:30 (19:45 in Sept), or 30 minutes after the first boat to finish, whichever is the later.
Radios	The race officer may broadcast additional instructions from time to time on VHF Channel M1(37)

POFSA COURSE MARKS & ABBREVIATIONS

BR	BLACK ROCK BUOY	NB	NORTH BANK
C	CENTRAL	OW	OLD WALL
CA	CASTLE	P	PENDENNIS SHIPYARD
CK	CARRICK	PW	MYLOR YACHT HARBOUR
CN	SKB SAILS	PB	PILL
EA	EASTERN (DROP MARK)	R	ROSEMULLIAN
F	FINISH	RE	CHALLENGER MARINE
G	GOVERNOR	SD	ST MAWES S.C. D FLAG
GR	ROGER TAYLOR OPTOMETRIST	SN	GRAPEFRUIT GRAPHICS
GY	FALMOUTH BEACH HOTEL	T	FALMOUTH BOAT CONSTRUCTION
HD	HEADLAND	TU	MYLOR CHANDLERY
J	ST JUST	TV	TAVERN
JB	PENRYN DENTAL PRACTISE	V	VILT
L	LONG LODGE	W	RUSTLER YACHTS
M	COSAWES PARK	WN	WEST NARROWS
ME	MESSACK BUOY	WT	ANCASTA
N	NARE	Z	ZONE

COURSES - 2010 SEASON

Class letter on **GREEN** background indicates leave all marks to **starboard**.

A **RED** Class letter on a white background indicates leave all marks to **port** and **sail the course in reverse order**.

The **TURNING MARK** (flying flag "D") follows the listed marks on all courses (except the Triangle & Windward/ Leeward Courses) with more than one round and is always left to **PORT**.

ST MAWES CARDINAL BUOY(LUGO) IS A MARK ON EVERY COURSE AND MUST ALWAYS BEEN LEFT TO THE NORTH.

No	Course	Rnds	No	Course	Rnds	No	Course	Rnds
1	CN, T, V	2	16	BR, WN	2	31	G, T	2
2	CN, W	2	17	BR, V	2	32	CA, T, V	2
3	CN, GY	2	18	BR, NB	2	33	CA, G	3
4	CN, BR	3	19	BR, J	2	34	CA, T	2
5	CN, G	2	20	BR, G	2	35	CA, T, W	2
6	CN, SN	2	21	BR, T	2	36	CA, V	2
7	CN, T	2	22	BR, T, W	2	37	CA, WN	3
8	CN, V	2	23	BR CA	5	38	CA, SN	3
9	CN, P, V	2	24	BR, SN	3	39	CA, TV	5
10	CN, P	3	25	BR, P, W	2	40	CA, W	3
11	CN, WN	2	26	G, V	2	41	L, CA	5
12	CN, CA	4	27	G, J	2	42	L, G	3
13	CN, TV	4	28	G, NB	2	43	L, TV	5
14	BR, W	3	29	G, WN	3	44	L, BR	5
15	BR, GY	2	30	G, T	2	45	L, P	4

HARBOUR COURSES USING MOVABLE MARK X

Mark X will be positioned on a line between Carricknath Point and the Castle. All courses are **5 LAPS** and the Turning Mark follows the listed marks on all courses and is left to **PORT**. Marks must be left on the side indicated below. Class letter on **GREEN** background indicates sail the course as written. **RED** Class letter on a white background indicates sail the course in the **reverse order leaving each mark on the opposite side to that printed**.

46	L (S), X (S), TV (S)	49	X (S), TV (S)
47	X (S), TV (S), L (P)	50	L (S), X (S)
48	TV (P), L (S), X (S)		

ZIG-ZAG COURSES - ONE ROUND ONLY

Marks must be left on the side indicated below. Class letter on **GREEN** indicates sail the course as written. Class letter on **RED** indicates sail the course in the **reverse order leaving each mark on the opposite side** to that printed.

51	CN (S), P (S), WN (P), T (S), J (S), CA (S), G (S).
52	BR (S), SN (P), G (S), J (P), T (P), W (S), P (P), CA (P).
53	CN (S), SN (P), G (P), CA (P), V (P), T (P), BR (P), WN (S).
54	BR (S), NB (P), T (P), G (P), V (S), CN (P).
55	BR (S), V (P), T (P), CN (P).
56	L (S), G (S), V (S), CN (S), P (S), WN (S)

CARRICK TRIANGLE OR WINDWARD/LEEWARD COURSES

These courses will use the usual start & finish lines, but boats will **NOT** return to the Turning Mark after the completion of each round. Class letter on **GREEN** indicates leave all marks to **starboard**. Class letter on **RED** indicates leave all marks to **port and sail the course in the reverse order to that printed**.

Triangle Courses - 3 Rounds	61	L, BR, G	
57	CN, BR, W	62	CN, P, SN
58	L, G, W		
59	CN, WN, SN		
60	BR, G, SN		

Windward/Leeward - Courses as described

63	CN, V	2 rounds	66	CN, GY	2 rounds
64	L, T	2 rounds	67	P, J	2 rounds
65	BR, SD	3 rounds then BR Finish	68	CN, WN	3 rounds

WITH THANKS TO OUR SPONSORS



Online marketing & booking for holiday cottages, homes & apartments around St Mawes & across the Roseland Peninsula.

Let us help you market your holiday home & benefit from our low fees. Call us on 01872 264441.