

The Ajax One Design Class South West Championship 2017

Friday 14th – Sunday 16th July

Organising Authority (OA): St Mawes Sailing Club,
Cornwall, UK

in conjunction with the Ajax Class Association

SAILING INSTRUCTIONS

Abbreviations:

[NP] - A breach of this rule will not be grounds for protest by a boat.

[DP] - Rules for which the penalties are at the discretion of the protest committee.

1. RULES

- 1.1 The regatta will be governed by the rules as defined in *The Racing Rules of Sailing* (RRS). Changes to racing rules are described in the relevant sailing instruction.
- 1.2 In the event of conflict between the notice of race and these sailing instructions then the sailing instructions shall prevail. This changes RRS 63.7.

2. NOTICES TO COMPETITORS

- 2.1 The race office is located within StMSC. Notices to competitors will be posted on the official event notice board located in the bar area.
- 2.2 The race committee will also use marine VHF channel 77 to communicate with boats. This will include general information and a start sequence narrative. Failure to receive this information shall not be grounds for redress. This changes RRS 62.1(a).

3. CHANGES TO SAILING INSTRUCTIONS

- 3.1 Except as provided in SI 3.2, any change to the sailing instructions will be posted before 0830 on the day it will take effect, except that any change to the schedule of races will be posted by 2000 on the day before it will take effect.
- 3.2 Routine information contained in these SI, e.g. mark descriptions and course configurations, may be changed by VHF announcement. Failure to receive this information shall not be grounds for redress. This changes RRS 62.1(a).

4. SIGNALS MADE ASHORE

- 4.1 Signals made ashore will be displayed from the mast at StMSC.
- 4.2 When Race Signal AP is displayed ashore, “1 minute” is replaced with “not less than 90 minutes” in RRS Race Signals AP. This changes RRS Race Signals AP.
- 4.3 Race Signal AP over H displayed ashore means “Boats shall not leave the harbour. Wait for further instructions”. This adds to RRS Race Signal AP over H.
- 4.4 When Race Signal Y is displayed ashore, RRS 40 (personal flotation devices) applies at all times while afloat. This changes RRS Part 4 Preamble.

5. SCHEDULE OF RACING

5.1 Schedule

Date	Activity	Time	High Water
Friday 14 th	Two races back-to-back	First warning signal 1055	09.13 4.4m
	Third race	After a short break	
Saturday 15 th	Two races back-to-back	First warning signal 1055	09.52 4.5m
	Third race	After a short break	
Sunday 16 th	Two races back-to-back	First warning signal 1030	10.43 4.4m

- 5.2 The warning signal for each succeeding race will be made as soon as practicable. To alert boats that a race will begin soon, the orange starting line flag will be displayed with one sound at least five minutes before a warning signal is displayed.
- 5.3 In the event of races being abandoned or postponed, one additional race may be scheduled on Sunday but no warning signal will be made after 1500.

6. CLASS FLAG

The class flag displayed at the warning signal will be flag W. Boats are not required to display the class flag.

7. RACING AREAS

Racing will take place in Falmouth Bay or adjacent waters to the east. If conditions in the Bay are unsuitable, racing may be held within the Fal estuary (see addendum A). An announcement will be made on marine VHF channel 77 and an official boat, or boats, will direct competitors to the appropriate area.

8. COURSES

Courses will be Windward-Leeward or Windward-Leeward-Triangle. The diagrams in addendum B show the course, the order in which marks are to be passed, and the side on which each mark is to be left. Numeral pennant 1 or 2 will be displayed to indicate which course is to be sailed.

9. MARKS

- 9.1 Marks 1, 2 and 3 will be orange conical inflatable buoys.
- 9.2 Mark 1a will be a pink spherical plastic buoy.
- 9.3 The mark at the starboard end of the start line will be the race committee signals vessel. The mark at the port end will be a yellow conical inflatable buoy.
- 9.4 The finish line marks will be the race committee signals vessel at the starboard end and a white spherical plastic buoy at the port end.

10. AREAS THAT ARE OBSTRUCTIONS [NP][DP]

- 10.1 Commercial and naval shipping. Areas around commercial and naval vessels under way and constricted in their ability to manoeuvre are designated as moving exclusion zones. Such exclusion zones extend to 100m on all sides of the vessel and around any tugs, pilot/harbour authority boats and official boats escorting the vessel. A boat shall not enter the exclusion zone, and, if becalmed, shall use any method of propulsion to move out of the way. This shall only be sufficient to move out of the exclusion zone by the safest possible route and shall not offer the boat significant advantage in the race.
- 10.2 Diving activity. Exclusion zones extend 25m around a dive boat displaying international code flag A, an orange pillar mark indicating a diver beneath the surface, and a diver on the surface. A boat shall not enter the exclusion zone.

11. THE START

The starting line will be between staffs displaying an orange flag on the mark at the starboard end, and the course side of the mark at the port end.

12. CHANGE TO THE NEXT LEG OF THE COURSE

To change the next leg of the course, the race committee will move the original mark. The change will be signalled on VHF marine channel 77. This changes RRS 33(a) and (b).

13. THE FINISH

The finishing line will be between a staff displaying an orange flag on the mark at the starboard end, and the course side of the mark at the port end.

14. PENALTY SYSTEM

The Two-Turns Penalty is replaced by the One-Turn Penalty. This changes RRS 44.1.

15. TIME LIMITS AND TARGET TIMES [NP]

15.1 Time limits and target times are as follows:

Target time	Mark 1 time limit	Time limit	Finish window
60 mins	40 mins	90 mins	20 mins

15.2 If no boat has passed Mark 1 within the Mark 1 time limit, then the race shall be abandoned. This changes RRS 35.

15.3 Boats failing to finish within the stated finish window after the first boat sails the course and finishes will be scored Did Not Finish (DNF). This changes RRS 35, A4 and A5.

16. PROTESTS AND REQUESTS FOR REDRESS

16.1 Protest forms are available at the race office. Protests and requests for redress or reopening shall be delivered there within the appropriate time limit.

16.2 The protest time limit is 90 minutes after the last boat has finished the last race of the day.

16.3 Notices will be posted within 30 minutes of the protest time limit to inform competitors of hearings in which they are parties or named as witnesses. Hearings will be held in the protest room, located at StMSC beginning at the time posted.

16.4 Notices of protests by the race committee or protest committee will be posted to inform boats under RRS 61.1(b).

16.5 Breaches of SIs marked [NP] will not be grounds for protest by a boat. This changes RRS 60.1(a).

16.6 Penalties for breaches of SIs marked [DP] or class rules are at the discretion of the protest committee.

16.7 A boat may accept a discretionary penalty for the breaches stated in SI 16.6 before a hearing concerning the same incident by completing a form available from the protest room.

16.8 Adding to RRS 66, if race signal N over A is displayed ashore on the last scheduled day of racing, a request for reopening a hearing shall be delivered not later than 30 minutes after the signal is displayed.

17. SCORING

17.1 A boat starting later than 5 minutes after her starting signal will be scored Did Not Start (DNS). This changes RRS A4 and A5.

- 17.2** Eight races are scheduled. A minimum of 4 races shall be completed to constitute the championship.
- 17.3** When from 4 to 6 races have been completed, a boat's series score will be the total of her race scores excluding her worst score.
- 17.4** When 7 or 8 races have been completed, a boat's series score will be the total of her race scores excluding her two worst scores.

18. SAFETY REGULATIONS [DP][NP]

- 18.1** The race committee will protest a boat for a breach of these safety regulations.
- 18.2** Boats not leaving the harbour for a scheduled race shall promptly notify the race office (01326 270686) or the race officer (07768 157287).
- 18.3** On arrival in the racing area, boats shall sail closely to the race committee signals vessel, clearly showing their sail numbers.
- 18.4** A boat that retires from racing shall notify the race committee before leaving the racing area, or if that is not possible, shall notify the race office or race officer as soon as possible after returning ashore.
- 18.5** All boats shall maintain a listening watch on VHF channel 77.

19. REPLACEMENT OF CREW OR EQUIPMENT

There is no restriction on the substitution of competitors or damaged/lost equipment, except that the names of substituted competitors shall be notified to the race committee signals vessel before the warning signal of the first race in which they participate.

20. EQUIPMENT AND MEASUREMENT CHECKS [DP]

Boats and equipment may be inspected at any time during the regatta for compliance with the class rules and sailing instructions. On the water, a boat can be instructed by a race committee equipment inspector or measurer to proceed immediately to a designated area for inspection.

21. OFFICIAL BOATS

Official boats will be marked with the letters "StMSC" on the hull.

22. SUPPORT BOATS [DP]

- 22.1** Except when asked to assist by the race committee, or to rescue a competitor who is ill, injured or in danger, support boats shall remain more than 50 metres from the course area from the preparatory signal until all boats have finished or retired or the race committee signals a postponement, general recall or abandonment.
- 22.2** Support boats shall comply with any reasonable request from a race official.
- 22.3** An alleged breach of SI 22.1 and 22.2 may be referred to the protest committee.

23. HAUL-OUT RESTRICTIONS [DP]

Boats shall not be hauled out during the regatta except with and according to the terms of prior written permission of the race committee. Requests to haul-out shall be made at the first reasonable opportunity in writing on a form available from the race office.

24. DIVING EQUIPMENT AND PLASTIC POOLS [DP]

Underwater breathing apparatus and plastic pools or their equivalent shall not be used around boats between the preparatory signal of the first race and the end of the regatta.

25. RADIO COMMUNICATION [DP]

- 25.1** Except in an emergency, a boat shall neither make radio transmissions while racing nor receive radio communications not available to all boats. This restriction also applies to mobile telephones.
- 25.2** The race committee may make use of marine VHF channel 77 to make announcements to competitors, including during the pre-start period. Any announcement, or failure to make an announcement, shall not be cause for redress.

26. PRIZES

- 26.1** A perpetual trophy will be awarded to the winner of the championships
- 26.2** Keeper prizes will be awarded for 1st to 3rd places in the championship. The OA and class association may also award other prizes.

27. RISK STATEMENT

- 27.1** Rule 4 of the Racing Rules of Sailing states: "The responsibility for a boat's decision to participate in a race or to continue racing is hers alone".
- 27.2** Sailing is by its nature an unpredictable sport and therefore inherently involves an element of risk. By taking part in the event, each competitor agrees and acknowledges that:
- (a) they are aware of the inherent element of risk involved in the sport and accept responsibility for the exposure of themselves, their crew and their boat to such inherent risk whilst taking part in the event;
 - (b) they are responsible for the safety of themselves, their crew, their boat and their other property whether afloat or ashore;
 - (c) they accept responsibility for any injury, damage or loss to the extent caused by their own actions and omissions;
 - (d) their boat is in good order, equipped to sail in the event and they are fit to participate;
 - (e) provision of a race management team, patrol boats and other officials and volunteers by the event organiser does not relieve them of their own responsibilities;
 - (f) provision of patrol boat cover is limited to such assistance, particularly in extreme weather conditions, as can be practically provided in the circumstances;
 - (g) it is their responsibility to familiarise themselves with any risks specific to this venue or this event drawn to their attention in any rules and information produced for the venue of event and to attend any safety briefing held for the event.
- 27.3** The fact that the race committee conducts inspections of a boat does not reduce the responsibilities of each competitor set out in the notice of race and these sailing instructions.

28. INSURANCE

Each participating boat shall be insured with valid third-party liability insurance with a minimum cover of £3,000,000 per incident or the equivalent. Competitors will be required to sign a declaration to this effect.

Addendum A

Indicative course areas

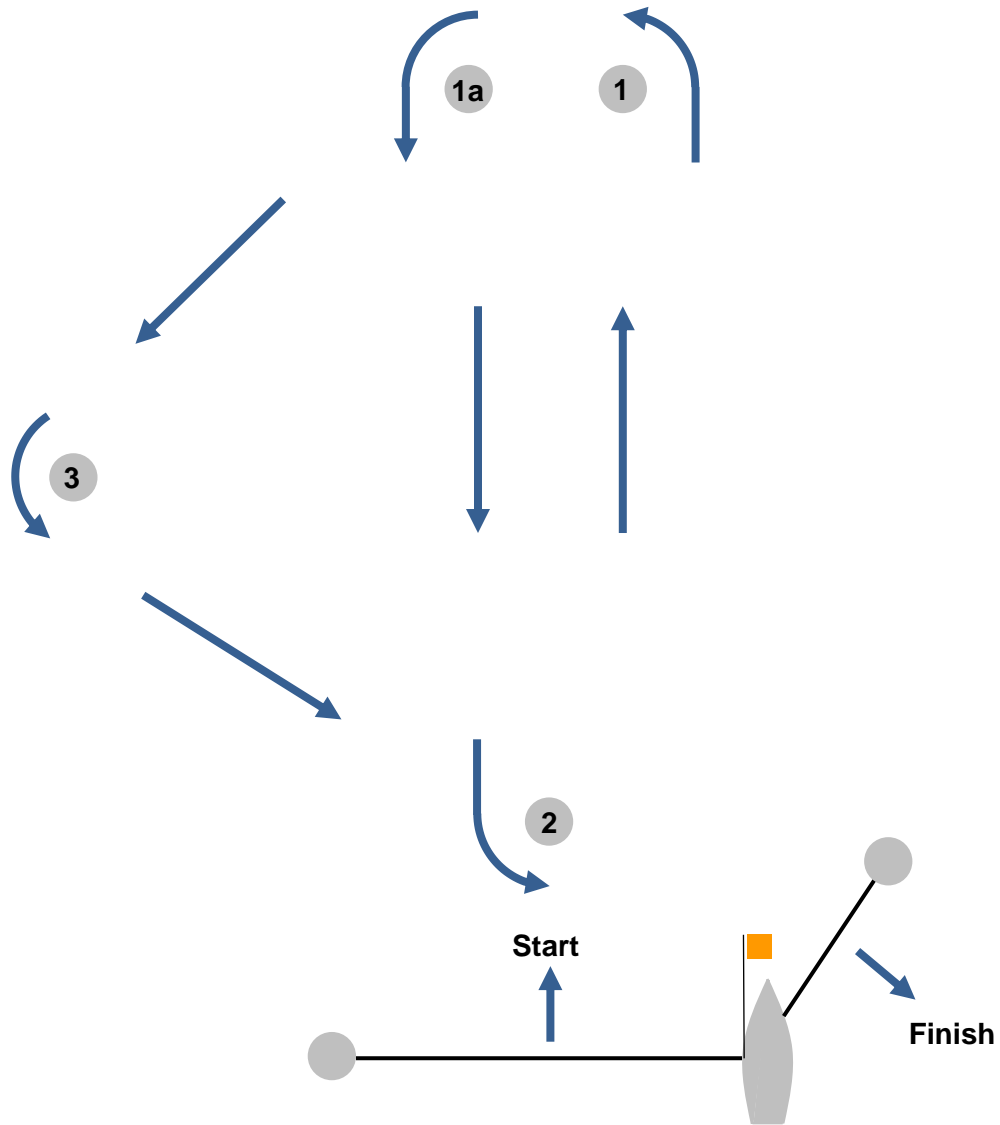


Addendum B

Course diagrams and mark rounding order

Course 1: Windward-Leeward-Triangle

Start – 1 – 1a – 2 – 1 – 3 – Finish



Course 2: Windward-Leeward

Start – 1 – 1a – 2 – 1 – 1a – 2 – Finish

